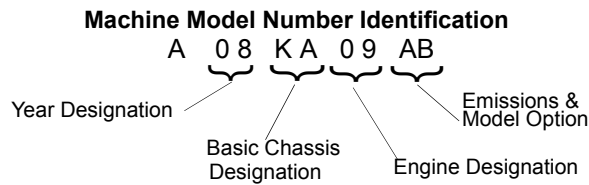


GENERAL INFORMATION

MODEL INFORMATION

Model Identification

The machine model number must be used with any correspondence regarding warranty or service.

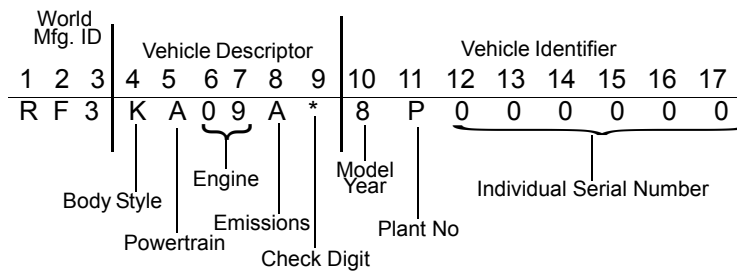


Engine Designation Numbers

50cc Model: M10A - Single Cylinder, Air Cooled, SOHC, 4-Stroke, Electric Start

90cc Model: H18S - Single Cylinder, Air Cooled, SOHC, 4-Stroke, Electric Start

VIN Identification



* This could be either a number or a letter

Engine Serial Number Location

Whenever corresponding about an engine, be sure to refer to the engine serial number. This information can be found stamped on the top LH side of the crankcase as shown below.

Vehicle Identification Number Location

The vehicle identification number (VIN) and engine serial number are important for identification purposes. See the illustrations below as a location reference.

