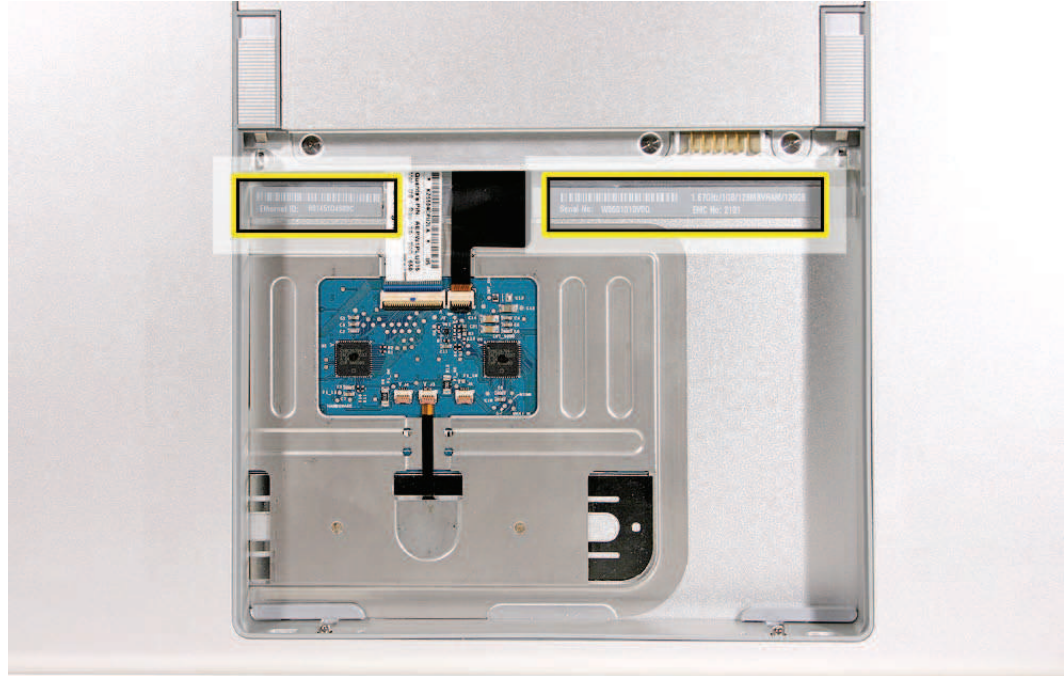

Serial Number and Ethernet ID

The Serial Number and Ethernet ID are located in the battery bay.



Tools

The takeapart procedure for the MacBook Pro (15-inch Core 2 Duo) requires the following tools:

- Clean non-marring work surface
- ESD wrist strap and mat
- Multi-compartment screw tray (such as a plastic ice cube tray)
- #0 Phillips screwdriver (magnetized)
- #1 Phillips screwdriver (magnetized)
- Torx T6 screwdriver (magnetized)
- 4 mm socket wrench
- Black stick (nylon probe 922-5065) or other non-conductive nylon or plastic flat-blade tool
- Razor knife
- Needle-point metal probe
- Needlenose pliers
- Tweezers
- Kapton tape (922-1731) (0.5-inch x 12-yard roll)
- Thermal grease (922-7144)
- Gasket kit (076-1238)
- Alcohol pads
- Fine-point felt-tip permanent marker
- Apple Pro keyboard and mouse (for troubleshooting)