

MODELS COVERED IN THIS MANUAL

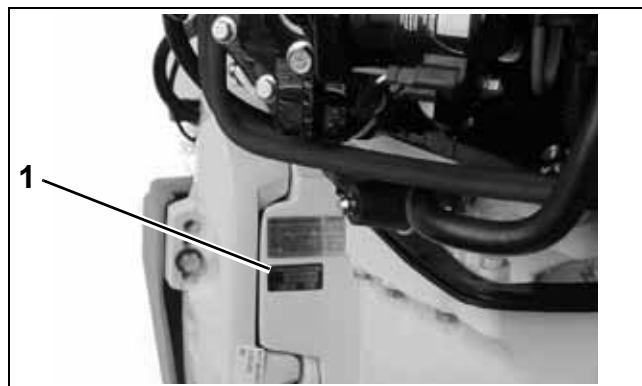
This manual covers service information on all 200.1 cubic inch, 90° V Evinrude E-TEC® models.

Model Number	Shaft	Color	Gearcase
E200DHLSCM	20"	BL	"L"
E200DHLSCF	20"	BL	"L"
E200DHLSCG	20"	BL	"L2"
E200HSLSCR	20"	WH	"L"
E200HSLSCF	20"	WH	"L"
E200HSLSCG	20"	WH	"L2"
E200HVLSCS	20"	WH	"M"
E200HVLSCF	20"	WH	"M"
E200HVLSCG	20"	WH	"M2"
E200DHXSCR	25"	WH	"M"
E200DHXSCF	25"	WH	"M"
E200DHXSCG	25"	WH	"M2"
E200HCXSCR	25"	WH	"M" CR
E200HCXSCF	25"	WH	"M" CR
E200HCXSCG	25"	WH	"M2" CR
E225DPLSCM	20"	BL	"M"
E225DPLSCF	20"	BL	"M"
E225DPLSCG	20"	BL	"M2"
E225DHLSCM	20"	BL	"L"
E225DHLSCF	20"	BL	"L"
E225DHLSCG	20"	BL	"L2"
E225HSLSCS	20"	WH	"L"
E225HSLSCF	20"	WH	"L"
E225HSLSCG	20"	WH	"L2"
E225DHXSCA	25"	BL	"L"
E225DHXSCF	25"	BL	"L"
E225DHXSCG	25"	BL	"L2"
E225DPXSCM	25"	WH	"M"
E225DPXSCF	25"	WH	"M"
E225DPXSCG	25"	WH	"M2"
E225DCXSCM	25"	WH	"M" CR
E225DCXSCF	25"	WH	"M" CR
E225DCXSCG	25"	WH	"M2" CR
E225DPZSCM	30"	WH	"M"
E225DPZSCF	30"	WH	"M"
E225DPZSCG	30"	WH	"M2"
E225DCZSCM	30"	WH	"M" CR
E225DCZSCF	30"	WH	"M" CR
E225DCZSCG	30"	WH	"M2" CR

Model Number	Shaft	Color	Gearcase
E250DPLSCM	20"	BL	"M"
E250DPLSCF	20"	BL	"M"
E250DPLSCG	20"	BL	"M2"
E250DPXSCM	25"	WH	"M"
E250DPXSCF	25"	WH	"M"
E250DPXSCG	25"	WH	"M2"
E250DCXSCM	25"	WH	"M" CR
E250DCXSCF	25"	WH	"M" CR
E250DCXSCG	25"	WH	"M2" CR
E250DPZSCM	30"	WH	"M"
E250DPZSCF	30"	WH	"M"
E250DPZSCG	30"	WH	"M2"
E250DCZSCM	30"	WH	"M" CR
E250DCZSCF	30"	WH	"M" CR
E250DCZSCG	30"	WH	"M2" CR

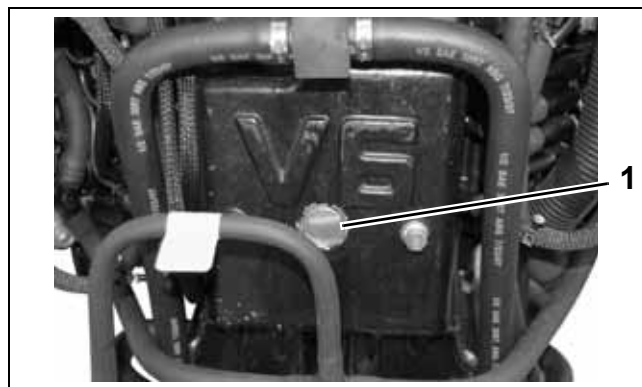
Identifying Model and Serial Numbers

Outboard model and serial numbers are located on the swivel bracket and on the powerhead.



1. Model and serial number

000449



1. Serial number

006828